



It's a Dog's LIFE in Belthorn!



Your Community Freehouse & Village News, Nov 2022

Welcome to the 18th edition of A Dog's Life (in Belthorn). As the climate starts to get chilly in our village on the hill, there's food, fun and festivities filling the pub calendar and warming our community. We take a look at recent events, look forward to winter ones and celebrate some of our local heroes.

We're a 2022 Tripadvisor Traveler's Choice Award Winner!

●●●●● Reviewed 4 weeks ago	☐ via mobile	●●●●● Reviewed 1 week ago
Quality ingredients & unique dishes		Very welcoming staff
●●●●● Reviewed 23 July 2022		●●●●● Reviewed 17 September 2022
Exceptional (as always)		Excellent Sunday Roasts
●●●●● Reviewed 1 week ago		●●●●● Reviewed 1 week ago
One to add to the list		Superb

Travelers' Choice 2022

THE TRAVELLERS' CHOICE

Based on a full year of fantastic Tripadvisor reviews, we have been awarded Tripadvisor's 2022 Travellers' Choice Award!

The award celebrates businesses that have received great traveller reviews from diners around the globe on Tripadvisor over the last 12 months. As challenging as the past year was, The Dog

Inn stood out by consistently delivering positive experiences to diners.

With a difficult 2 years for hospitality businesses, restaurant operator Jamie Evans has worked incredibly hard in keeping The Dog Inn amongst Tripadvisor's top 5 restaurants in Blackburn. The 5 star reviews just keep on coming; with quality of food

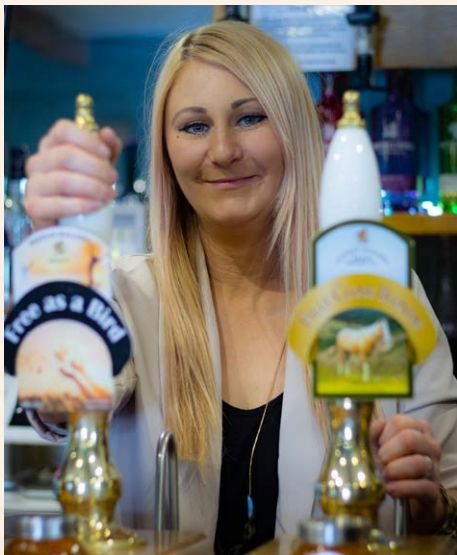
and service from staff featuring highly in the reviews.

Jamie Evans says, "Priority has always been to establish a reputation for excellent food and to champion the fantastic ingredients available on our doorstep, I would like to thank our customers for their continued support, and look forward to Christmas at The Dog Inn."

A NOTE FROM MANAGER NIC

2022 has been a great year so far for The Dog Inn with Jamie back in the kitchen and some fantastic reviews coming through not only about the quality of food but also quality of service and atmosphere as well as how friendly, welcoming and cosy we are!

We have run several new events that have been really well supported. Bekki's Bingo nights runs once a month, Liam's poker nights and Steve's ever popular quiz nights really do bring in the crowds. Our children's Halloween party



was another roaring success selling out very quickly! We've also just received news of the

pub getting listed in CAMRA's Good Beer guide (see page 6).

Moving forward towards Christmas we have lots of events for the village including the children's Christmas party, the over 60s Christmas party and of course our carols round the tree with Phil's brass band joining us!

It really is a team effort at The Dog Inn and without the support of locals the Belthorn committee, volunteers and of course the hardworking staff we would not be the pub we are today! I thoroughly enjoy managing The Dog Inn and look forward to more of the same in 2023!

A few words from Dave Hollins, Chair of the Board

As we move through autumn towards Christmas, we are delighted to see many traditional events and activities in place, the children's Halloween party, fireworks and carols round the Christmas tree to mention a few - not forgetting our new autumn menu in the restaurant.

This carries on a bumper year for community events at The Dog Inn, where we have hosted more events and activities than in any other year since the pub became community owned - with the events for the late Queen's Platinum Jubilee as the centrepiece. Thanks to all our

staff and volunteers who make this happen.

The Dog Inn continues to trade well despite these difficult times when so many pubs are sadly struggling or closing down. Along with other hospitality businesses, we face pressures relating to the rise in energy prices. Our gas contract freezes prices until 2024, but the price of our electricity has risen steeply with the recent end of our previous contract. The board is currently looking at measures to manage this increase in our energy bills. We are immensely grateful for the continued support of the

people of Belthorn - in return we will continue to serve you and be at the heart of village life for long into the future.

OPENING HOURS

BAR / COFFEE SHOP

MON: CLOSED

TUE: 3pm - 7pm

WED - SAT: 12pm - 11pm

SUNDAY: 12pm - 9pm

RESTAURANT

MON & TUE: CLOSED

WED - SAT: 12pm - 9pm

SUN: 12pm - 6pm

SHARING IS CARING

The other day, I asked on facebook (Belthorn Days) if anyone had a cat carrier they no longer needed, as I had broken one of ours. I got two lovely responses saying that there were cat carriers that I could borrow at any time.

This started me thinking about all the things we have in our houses / sheds / garages that we only use very infrequently, that we could possibly let other people borrow when they need one, instead of them having to buy one themselves. I thought about things I have that I rarely use: a compressor, a pressure-washer, a VAX carpet cleaner, a wall-paper steamer, a hand-held sander - and there's probably loads more. Places have started to set up "Libraries of Things" and whilst I'm not suggesting anything so formal, would there be any interest in this - possibly run through a facebook page? If you have any ideas please let me know via brown70yvonne@gmail.com.

ECO-WARRIORS

Is anyone interested in an Eco-club (or whatever we want to call it) For adults, children or both, to come together to discuss climate-change related and environmental issues, and to share ways that individuals are changing their behaviours to try to help.

Maybe organising regular litter picks, or finding other ways to improve the village, and ways to help tackle climate change. If there is enough interest, I will set this up - please contact me (brown70yvonne@gmail.com) if you would like to be involved.



FOOD FOR ALL

Hazel and Dave have been collecting food donations from Belthorn and delivering to Oakenhurst Road Food Bank, Blackburn for over 2 years.

Every week regular donors from our village add an item or two to their weekly shop contributing to approximately 100kg of donations every month. The village generosity and Hazel and Dave's kindness allows the less fortunate to have a momentary pause in their hunger. If every household in Belthorn could spare a small item every week, imagine the difference this could make to someone's life.

The foodbank is open every Monday, Wednesday and Friday between 9am and 2pm. If they don't have any donations, they can't open.

There is also a regular plea for sanitary products. If you can spare anything from tinned goods, cereal, dried goods, fresh or frozen products and any new sanitary products, please drop them at the Dog Inn by 10am each Wednesday morning when Hazel and Dave can continue their mission to help those who need it most.

Thank you Hazel & Dave!



Self serve vending machine based on Elton Rd, across from Marco Polo restaurant. Stocking delicious free range eggs from our own flock of pasture raised hens. We also sell local farm produce from a refrigerated vending machine, all self serve, open everyday of the year 7am - 7pm.

 @hens.on.the.hill
 @HenOnTheHill

Hens On The Hill,
Elton Rd, Belthorn, BB1 2PL
James: 07796 342763



JOIN OUR VISION



GROWING GREEN



When we first bought the Dog Inn, one of the plans involved using some of the field at the back for community growing spaces for fruit and vegetables.

Unfortunately, this is not something we have managed to do yet. However, Jamie in the restaurant is also keen that some growing goes on out there, to provide fresh, hyper-local produce for the restaurant, so this is something that we are keen to progress with.

If there is enough community interest, they may be an option to apply for a grant to pay for items such as a shed, raised beds, maybe even a greenhouse, or chickens!

Please contact us (admin@thedoginnatbelthorn.net) if this is something you would be interested in getting involved in - either for your own growing space, or to assist growing food for the restaurant.

We currently have a number of shares that are available for purchase in the Dog Inn. Community ownership ensures that the business works alongside existing village businesses rather than competing directly with them.

We believe it is vital that The Dog Inn is genuinely community-owned and our ambition is to have as many of the population of Belthorn and surrounding communities as co-owners of The Dog Inn as possible, shaping its future.

Shares are available from a minimum investment of £250, up to £10,000 and can be paid for in 10 equal monthly installments. Shares can be purchased by individuals

(over the age of 16), corporate bodies, voluntary organisations and public sector investors.

We aim to pay annual interest payments of 3%, although this has not been possible over the past couple of years due to the impact of the Covid pandemic. Full details of the share offer can be found on our website at: <https://thedoginnatbelthorn.net/wp-content/uploads/2022/10/Open-Share-Offer-2022.pdf>

If no shares are available at the time of application, applicants will be put on a waiting list, and will be able to buy shares as and when they are relinquished by other shareholders. Transfer of shares is not permitted - shares can only be relinquished to the Society.

Four Seasons Garden Centre

Darwen's Hidden Gem

Ashton Road Darwen BB3 2DX

01254 706890 fourseasonsgc@hotmail.co.uk



50 YEARS OF THE GOOD BEER GUIDE

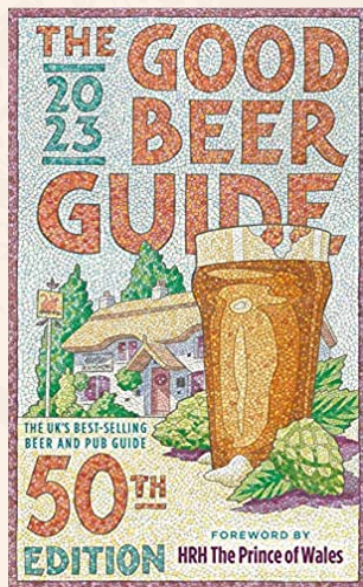
We are delighted to announce that we are back in CAMRA's Good Beer Guide for 2023! The Dog Inn will be featured in the 50th edition of the flagship publication. With over 50,000 pubs in Britain we are proud to be published in a guide listing just 4,500 of the finest outlets for real ales.

CAMRA believes well-run pubs, whether in rural or urban areas, play a critical social role in UK culture as the centres of community life. CAMRA supports the traditional pub as the best place to enjoy real ale, and to try one of the thousands

of superb beverages now produced across the UK.

The Dog Inn mainly uses local breweries to offer a selection of real ales including Reedley Hallows, Three B's and Bowland Brewery. We occasionally have a guest ales & themed ales to reflect events which may be happening at The Dog Inn, for example we had a Halloween ale, we had one for Remembrance Sunday and we will have one for Xmas too.

Real ales are often surprisingly popular with our diners who enjoy pairing with the restaurant's menu as they aren't gassy as lager.



DOG SHOW



A late September Sunday saw over 60 of Belthorn's finest four legged furry friends and their humans gather outside The Dog Inn for our ever popular annual Dog Show.

The classic Belthorn weather enhanced the tense atmosphere

as our local pooches competed in 10 classes including, 'Silkiest Ears', 'Waggiest Tail' and 'Most Handsome Dog'. Our Bar Manager Nic and her son Archie thoroughly enjoyed their job of head judges whilst laughter and barks echoed around.

Special thanks go out to the Dog Inn's Event's Committee as well as our Village Committee for once again putting on a fantastic event for our wonderful village on the hill.



MOST HANDSOME



PRETTIEST BITCH



CUTEST PUPPY



BEST SIX LEGS



WAGGIEST TAIL



BEST VETERAN



CHILD'S BEST FRIEND



SILKIEST EARS



SCRUFFIEST DOG OR BITCH



BEST FANCY DRESS



On 1st November we held our annual Firework Display - a joint venture between Belthorn Academy Primary School, the village committee and The Dog Inn.

Around 70 people came to watch the display - as usual, ably put on by Clive and Paul Carroll and their assistants, and once again, using quieter fireworks to minimise stress to farm animals and pets. The

school provided the pie supper, which was happily consumed by those attending! Around £140 was raised for the village committee funds, for which they are very grateful. We are also very grateful for the weather which allowed the event to go ahead - had we planned for the event to happen either a day earlier or a day later, it would have had to have been cancelled or postponed!



Spooky Fun in the Pub

On 30th October, over 30 children joined us for the annual Halloween party, organised in conjunction with the village committee.

The children enjoyed a magic show, party food and party

games, whilst a lot of the parents enjoyed a drink in the bar or the coffee shop. The fancy dress outfits were incredible and we would like to thank the children and their parents for their enthusiasm.



WHODUNNIT?

Having not been to a Murder Mystery evening before we really didn't know what to expect but what an enjoyable experience it turned out to be.

Jamie provided an excellent meal especially the pate starter which I thought was delicious and we were welcomed in with a glass of Prosecco setting the tone for the night. Everything was served throughout the evening so we could be eating and trying to weigh up the evidence played out before us. The format was well explained and the plot easy to follow. The actors were super, hamming up the performance and providing plenty of laughs while staying in character even during the questioning time. The whole evening lasted a couple of hours, a good way to spend a Saturday night. There were prizes at the end for the winners and also a prize for the most inventive answer which was hilarious. At £25 a head it was really good value and we will certainly be back for a repeat performance. *(Thanks to Lesley Dunn & Graham Slater for this write-up.)*

Following the success of the Murder Mystery night, we are holding another on Sat 28th January. As this date falls close to Burns Night, it will be a Burns Night / Scottish-themed evening. Watch our social media for further details. We would like to thank "Carry on Murdering" for helping us host these events.

WEEKLY EVENTS

EVERY TUESDAY - FRIDAY After-School Games, from 3pm.

Take shelter from the Belthorn weather & entertain the kids after school, Tuesday - Friday. We have plenty of board games and colouring equipment. Children must be accompanied.

WEDNESDAYS

Bridge Night, 8pm.

All standards of player welcome, from beginner to expert.

THURSDAYS

Coffee Morning, 10-12pm:

Come and join us for a chat and a brew. Free admission.

Craft & Chat, 2-4pm.

Bring some craft to do, or just come along for the chat!

Quiz Night, 8pm.

FRIDAYS

Happy Hours

From 5pm - 7pm. £3 a pint* | Real Ales £2.50 pint | Gin & Tonic £3 | Wine & Prosecco just £12 a bottle!

We will be showing all of England's games in the pub, fingers crossed they'll get passed the group stage!

Fri 25th Nov, 7pm:

World Cup 2022

England v USA, KO 7pm.

Happy hours run from 5pm - 7pm.

Sat 26th Nov, 7pm:

Bekki's Bingo

Bekki will be calling the numbers again for our popular bingo evening, in her own inimitable way. Cash prizes.

Tue 29th Nov, 7pm:

World Cup 2022

Wales v England, KO 7pm.

Opening from 3pm, pie & pint £6

Sat Dec 3rd, 2pm - 4pm

Children's Xmas Party

Organised by village committee - ticketed event.

Sat Dec 3rd, 4pm

Christmas Tree Lights

Switch On

Join our special guest Santa, in the countdown to the lights switch on!

Sun Dec 4th, 12pm - 4pm

Darwen Community Fayre

Selling crystals, candles, arts, lotions, antiques and Xmas themed gifts.

Sun Dec 4th, 6:10pm

Tuton Young Farmers

Christmas Tractor Run

Watch the Christmas themed tractor run pass through the village from the pub carpark. Always a fun event when the young farmers are in the festive spirit with their decorated tractors! Children's Hot Choc & Christmas chocolate - just £1!

Sun 11th Dec, 2pm

Over 60s Xmas Party

Organised by village committee - ticket only event.

Fri 16th Dec, 8pm:

Bekki's Xmas Bingo

Bekki will be counting down to Christmas & calling the numbers - cash prizes.

Sat Dec 17th, 12pm - 4pm

Local Xmas Craft Fair

For local craft makers

Sat Dec 17th, 6pm - 7pm

Carols round the tree with local brass band.

Come along and get into the

Christmas spirit with a glass of mulled wine and some carols!

Tue Dec 20th, 6:30pm - 7pm

Member's Surgery

A chance for shareholders to speak directly with a Board Member in order to raise any concerns, comments or suggestions.

Tues Dec 20th, 7pm - 10pm

Belthorn History Society

Christmas Party

Always good fun, there'll be games, a Jacob's Join supper, a special Christmas gift from the society for all members and general tomfoolery. Please bring along a Christmassy Secret Santa gift valued at £1.

Thurs Dec 22nd, 8pm

Christmas Quiz

Dig out your christmas attire & come along to our Christmas pub quiz!

New Year's Eve: Saturday 31st

December, 8:30pm - late: Live music with Mark Griffiths

Sat Jan 7th, 4pm

Chocolate Bingo

A fun afternoon for the family, ditch the new year's diet & come along for some bingo fun.

Tue Jan 17th, 6:30pm - 7pm

Member's Surgery

A chance for shareholders to speak directly with a Board Member in order to raise any concerns, comments or suggestions.

Sat Jan 28th, 8pm

Murder Mystery

Murder mystery themed evening with a 'Burns Night' set meal in the restaurant. Ticket details out soon!



Find us on:
facebook

NUTTALLS MILK DELIVERIES



NUTTALLS FRESH LOCAL MILK DELIVERIES



**EARLY MORNING DELIVERIES OF
FRESH LOCAL MILK, MILKSHAKES
FARMHOUSE BUTTER & FREE RANGE EGGS
TO YOUR DOOR IN ALL WEATHER**

SUZANNE: 07742 648709 / 01254 261742
nuttallsmilkdeliveries@btinternet.com

EMMA GOES BACK TO HER ROOTS

Village resident and recently appointed Chair of Governors at Belthorn Academy Primary School, Emma Nolan is a Belthornian through and through. Put simply, she loves Belthorn! The surrounding hills, the farmland, walking her dogs, steak nights at the Dog Inn with her husband Steven and generally being an active, generous and positive member of the community.



BY NICKY ASHWORTH

Born and raised in the village, Emma attended Belthorn Academy as a child with her sister and has this year seen her own children complete their final year in primary education at the same school. Belthorn is home, where Emma's roots are firmly planted and where her life has grown and flourished. Her family live here and her heart strings have been attached to the village for over 40 years.

It is this personal invested interest, enhanced by 25 years of experience in the corporate sector as Head of Operations that has borne a passion for Emma to want to give back.

When the opportunity to join Belthorn Academy's Governing body 3 years ago as Vice Chair arose, it was a simple but exciting decision. To be part of the team that makes something already good, grow into something great. And now the natural step up to Chair of Governors was a smooth one, thanks to the guidance and

support of the previous Chair and all round Belthorn hero – Yvonne Brown.

The Governing Board is at the very heart of the school whilst existing very much behind the scenes. This vital group keeps the all-important cogs turning whilst supporting the Senior Leadership team, who in turn guide the learning and support staff to deliver the best experience for each and every student who are at the very core of everyone's motivation.

Sitting with Emma in the school staff room, it is clear how much she feels at home greeting all staff who pop in, warmly as she chats openly and honestly about the exciting challenges to come. Spending many hours of her time in school every week, she is ready to give this role her all and actually feels it a privilege to be able to undertake it. But what stands out the most is her passion for Belthorn and for Belthorn Academy, a place that has been, still is and will

remain so long into the future, a huge part of her life, for her family, her parents, her children, her nieces and in Emma's words - hopefully one day her grandchildren!

Speaking very highly of the current governing board making up a wonderful and varied blend of people from many different areas of life both professionally and creatively including primary and secondary education, parents, CEOs and most

importantly, collectively an enthusiastic, passionate, group of people proud to lead and bring out the best in Belthorn Academy Primary School.

So please join us in congratulating Emma on her recent appointment at Belthorn Academy and wish her the very best of luck steering the governing body and our wonderful school to even greater heights!

Three things about Emma you might not know...

She loves cooking - and eating! Risotto is Emma's dish of the day!

She once spent the weekend driving Formula 1 cars – Watch out George Russell!

Her dream is to one day drive a vintage car from the top of beautiful Italy to the bottom of the boot visiting as many if not every vineyard on the way!

Cheers Emma!

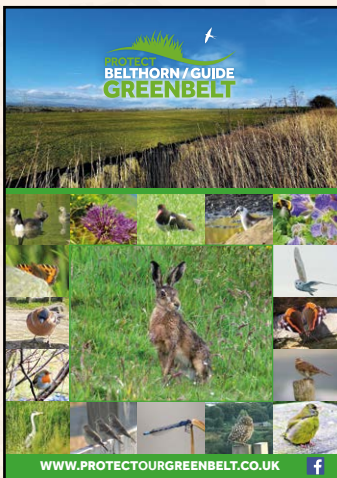


PROTECT BELTHORN / GUIDE GREENBELT

Protect Our Greenbelt has produced a 2023 calendar that features some fantastic photographs, captured by local people, of the diverse wildlife in and around the greenbelt area at Guide and Belthorn village.

There was a fantastic response to a photography competition that was launched earlier this year, and lots of brilliant images have been submitted by Guide & Belthorn residents, highlighting a variety of wildlife that will be under threat if Blackburn Council remove the surrounding countryside from greenbelt. Blackburn Council's local plan currently identifies this land for development as an employment site.

As well as publicising the diversity of the threatened wildlife, the Protect Our Greenbelt campaign aims to raise money to enable them to continue their fight against



the development. Calendars can be purchased for £7.99 via Facebook messenger @protectourgreenbeltandrural communities or from The Dog Inn's Christmas fayre on 17th December 2022.

They also can be purchased at the coffee shop at The Dog Inn on a cash only basis.

To keep up-to-date with the campaign's news visit www.protectourgreenbelt.co.uk or follow them on facebook.

THANKS KATH!

Back in July 2022, Kathryn Sharpe resigned as Secretary and as a member of the Board of Directors of the Dog Inn.

Kathryn had been instrumental in the story of the Community's acquisition of the pub: it was Kathryn's suggestion that we, as a Community, should try to buy the pub when it was put up for sale back in 2014. She organised the first meetings, held in the school, to gauge the amount of interest from the village in trying to purchase the pub, and from there, registered the pub as an "Asset of Community Value".

When the pub was sold in early 2015, prior to auction, to Ribbles Valley Luxury Homes, she was instrumental in meeting and persuading the new owners to sell to the community, if we could raise the funds. As you all know - we succeeded, but her involvement didn't stop there. She was the first Secretary to the Society (a role she held until her resignation), and was instrumental in running the coffee shop over all the years between when we first bought the pub to the current day.

She coordinated the volunteers for the coffee shop, and often volunteered herself. She remains involved in the coffee shop, but is now focussing her energies on another important local issue - the proposed development on Green Belt land between Guide and Belthorn. We remain hugely indebted to Kathryn for her vision, drive and enthusiasm, as without her, the Dog Inn would most likely now be apartments.

The Dog's Life is written, designed & distributed by a team of Belthorn volunteers. Edited by Nicky Ashworth
01254 433188 | www.thedoginnatbelthorn.net | admin@thedoginnatbelthorn.net

